

Find out more about Global Business



Scan this QR code for direct access to online content

### Customised insurance solutions

Groupe Mutuel brings together several independent companies active in health and accident insurance, as well as life, patrimony and corporate insurance (daily allowance, accident insurance, occupational benefits and supplemental health insurance). Find out more about our extensive range of benefits.

#### For non binding personal advice

Monday to Thursday, from 08.00 to 12.00 and from 13.30 to 17.30  
(17.00 on Fridays and on the eve of public holidays)

**Hotline** 0848 803 777 | **Fax** 0848 803 112  
**Web** [www.groupemutuel.ch](http://www.groupemutuel.ch) | [www.corporatecare.ch](http://www.corporatecare.ch)



Groupe Mutuel

Health® Life® Patrimony® Corporate®

**Groupe Mutuel**  
Rue des Cèdres 5 – P.O. Box – CH-1919 Martigny

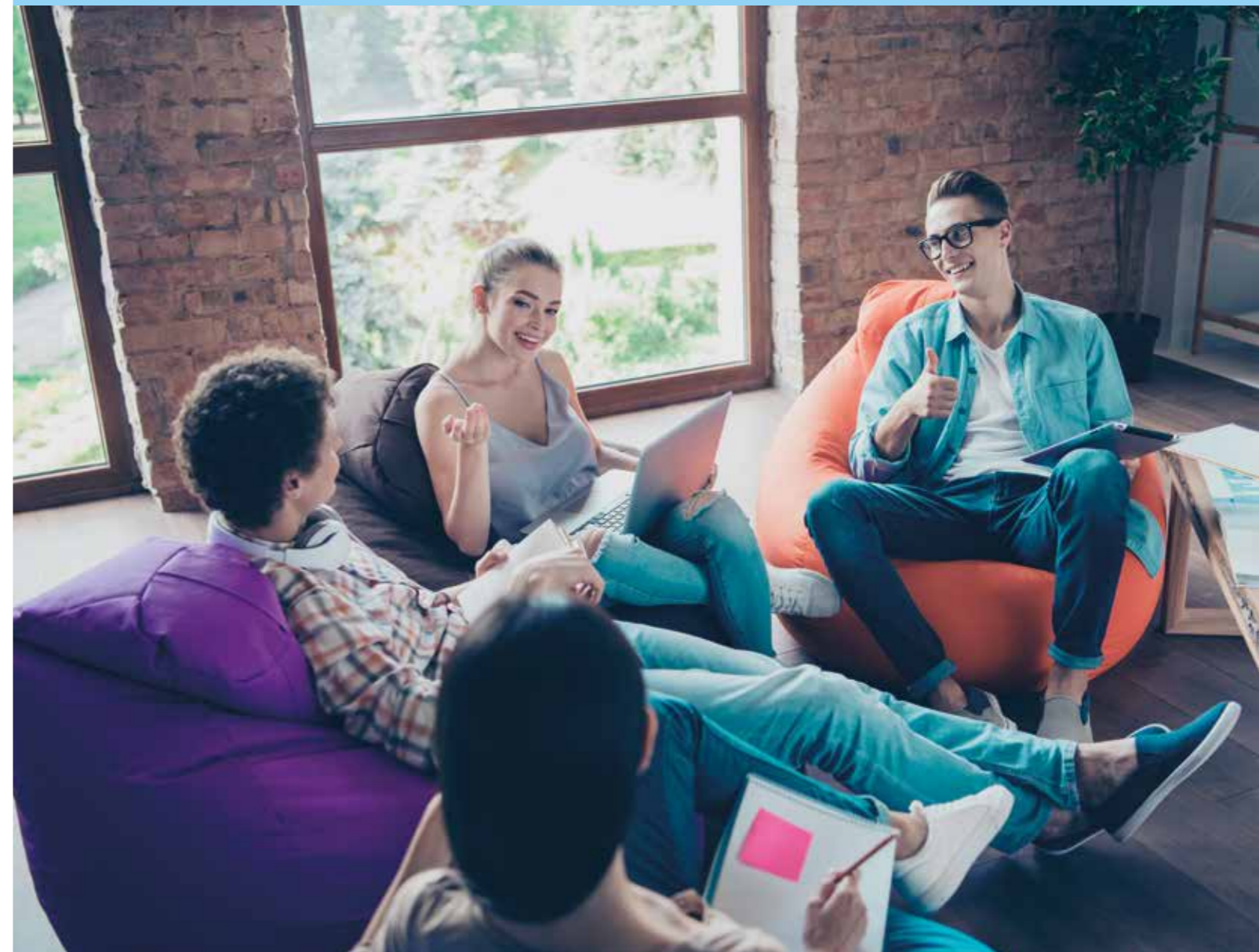
Avenir Assurance Maladie SA – Easy Sana Assurance Maladie SA – Mutuel Assurance Maladie SA – Philos Assurance Maladie SA – SUPRA-1846 SA – AMB Assurances SA  
Groupe Mutuel Assurances GMA SA – Mutuel Assurances SA – Groupe Mutuel Vie GMV SA  
Foundations managed by Groupe Mutuel: Groupe Mutuel Prévoyance-GMP – Mutuelle Valaisanne de Prévoyance – Mutuelle Neuchâteloise Assurance Maladie



Edition 7.18

# Global Business

## An advantageous solution for your employees



Groupe Mutuel

Health® Life® Patrimony® Corporate®





By taking out Global Business, framework contract with supplemental health insurance, at no additional cost, you will provide your employees with the opportunity to enjoy innovative benefits at an attractive price, as well as first-class healthcare coverage and social security.



### Global Business includes:

- › extended coverage of illness, maternity and accident benefits, available in three levels
- › admission without a medical questionnaire and with no age limit (Level 1);
- › free choice of ward (general, semi-private or private) at the time of hospitalisation (Level 2)
- › premium coverage in private ward (Level 3)
- › coverage of transport costs and accommodation for the insured person and his family in case of outpatient surgery (Levels 2 and 3);
- › generous coverage of alternative medicine treatments;
- › maternity benefits: ultrasound scans, birth preparation courses, breastfeeding allowance
- › an optional module with two classes for the coverage of dental care and orthodontic treatments;
- › coverage for your employees' family members;
- › an identical catalogue of benefits in Switzerland and abroad

### Your main advantages

- › **An exclusive offer**  
Thank to your partnership with Groupe Mutuel, your employees have exclusive and privileged access to Global Business coverage, a unique product in the market.
- › **A modern social benefit**
  - › A specific product for optimal medical coverage
  - › The ability to cover all or part of your employees' premiums

Offering these benefits develops employee loyalty and increases your attractiveness in terms of recruitment.
- › **A close relationship with your account manager**  
This key partner will ensure a smooth relationship with your company through regular contacts and active support in managing your contract.
- › **Corporate Extranet**  
"Corporate xNet", our secure management platform, ensures that it is easy and simple to notify the changes relating to your staff and to view your different coverage plans.
- › **A platform for promoting your services**  
As an employer, you can become partner of LeClub and benefit from a free platform for promoting your services to our insured members. Services can be offered on a local, regional or national level and will allow you to develop your business.

### Employee advantages

- › **Groupe Mutuel Assistance**  
For all trips or stays abroad, our hotline provides support in case of emergency, 24/7 and 365 days a year, at the following phone number: +41 848 808 111. The same call centre provides valuable information before a departure abroad: remote medical advice, as well as legal, technical and personal assistance.
- › **A daily health coach**  
Thanks to our partnership with Ignilife, your employees can benefit from health prevention programmes related to nutrition, physical exercise and mental health.
- › **LeClub**  
Your employees will be able to enjoy a number of discounts with different providers, whether in terms of health, wellness, sport, leisure or tourism.
- › **LOGIN magazine**  
Your employees will regularly receive LOGIN, the magazine of Groupe Mutuel, which provides information on our products and services, as well as useful advice, including on health issues.
- › **GMnet and GMapp**  
Thanks to the GMnet customer portal and its free mobile application GMapp, your employees may have access to information relating to their health insurance contract.

### Basic module

Benefits	Level 1	Level 2	Level 3
<b>Hospitalisation</b>	General ward  Abroad: max. CHF 3,000/day	Free choice of ward in exchange for the following contributions by the insured: › general ward: CHF 0 › semi-private ward: CHF 100/day, max. 30 day/year › private: CHF 200/day, max. 20 days/year  Abroad: max. CHF 3,000/day	Private ward  Abroad: max. CHF 3,000/day
<b>Outpatient surgery (accommodation and transport)</b>	No benefits	Max. CHF 400/year	Max. CHF 600/year
<b>Drugs</b>	90%	90%	90%
<b>Transport and search and rescue costs</b>	90%	90%	90%
<b>Alternative medicine</b>	30%, max. CHF 2,000/year	60%, max. CHF 3,000/year	90%, max. CHF 4,000/year
<b>Glasses and contact lenses</b>	CHF 150 every three years	CHF 200 every three years	CHF 200 every three years
<b>Medically-prescribed thermal cures</b>	No benefits	50%, max. 30 days/year	90%, max. 30 days/year
<b>Medically-prescribed convalescence cures</b>	No benefits	50%, max. 30 days/year	90%, max. 30 days/year
<b>Home help</b>	50%, max. CHF 1,500/year	50%, max. CHF 1,500/year	90%, max. CHF 2,500/year
<b>Vaccinations</b>	90%	90%	90%
<b>Check-up</b>	90%, max. CHF 600 every three years	90%, max. CHF 800 every three years	90%, max. CHF 1,000 every three years
<b>Second opinion</b>	90%	90%	90%
<b>Health Promotion (gym, back school, etc.)</b>	50%, max. CHF 200/year	50%, max. CHF 200/year	50%, max. CHF 200/year
<b>Ultrasound scans</b>	CHF 150 per pregnancy	CHF 150 per pregnancy	CHF 150 per pregnancy
<b>Childbirth preparation classes</b>	CHF 150 per pregnancy	CHF 150 per pregnancy	CHF 150 per pregnancy
<b>Home birth or outpatient birth</b>	CHF 800 per pregnancy	CHF 1,000 per pregnancy	CHF 1,200 per pregnancy
<b>One-time breastfeeding allowance</b>	CHF 100 per child	CHF 100 per child	CHF 100 per child
<b>Groupe Mutuel Assistance</b>	Emergency medical assistance, support and repatriation for trips and stays abroad	Emergency medical assistance, support and repatriation for trips and stays abroad	Emergency medical assistance, support and repatriation for trips and stays abroad

### "Dentaire plus" option

<b>Class 1 for children and adults</b>	75%, max. CHF 3,000/year	75%, max. CHF 3,000/year	75%, max. CHF 3,000/year
<b>Class 2 for children and adults</b>	75%, max. CHF 15,000/year	75%, max. CHF 15,000/year	75%, max. CHF 15,000/year

The special terms and conditions of insurance apply.