



Corporate Health Management (CHM)

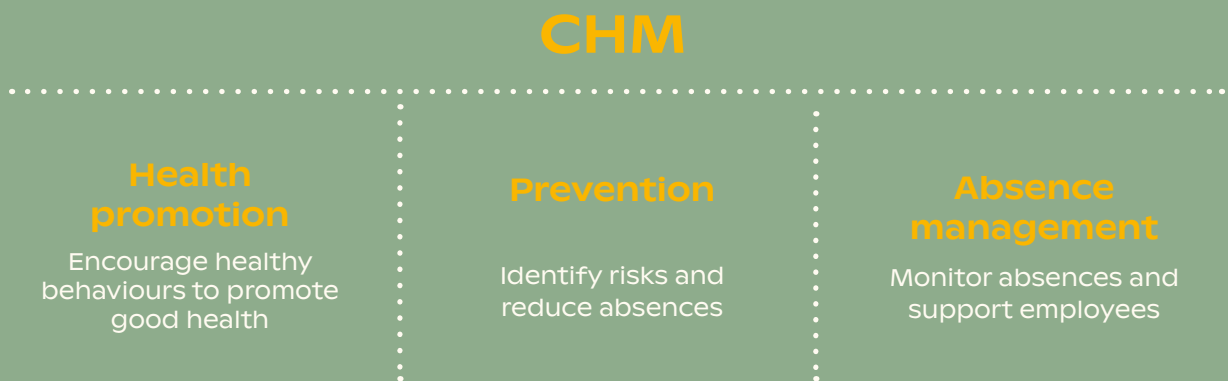
Happy and healthy employees for a successful company

groupemutuel

What is Corporate Health Management (CHM)?

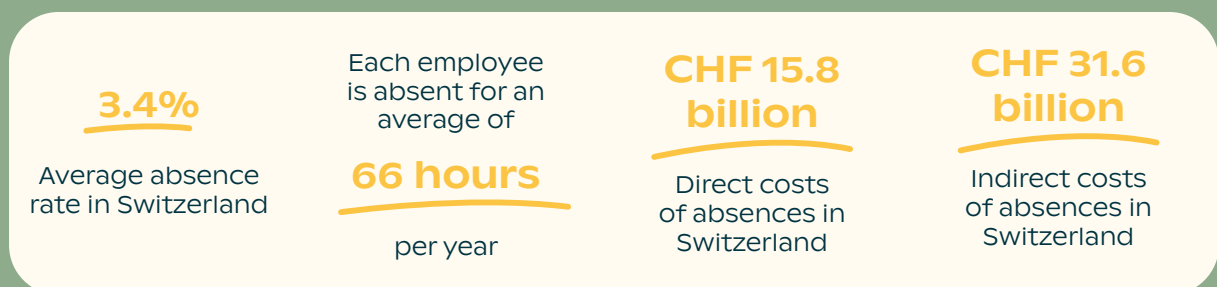
The CHM programme aims to implement measures and tools designed to support your employees. Healthy employees are essential for your company's success. We undertake to work by your side to implement a Corporate Health Programme that will serve your ambitions.

CHM pillars



What are the consequences of absences?

In Switzerland, every year, absences due to illness or accident can cost you a lot of money.



Figures 2023 Data status: 23.07.2024 Source: FSO - Work Volume Statistics (SVOLTA)



Corporate Health Management

A programme based on two support pillars



HR data on absenteeism



Health promotion campaigns



Implementation of customised measures



Manager training



Accident prevention workshops



Online Customer Area

...

Active management of cases of incapacity



Care Management



Therapeutic measures



Workplace assessment



Case Management



Coordination with social insurance institutions



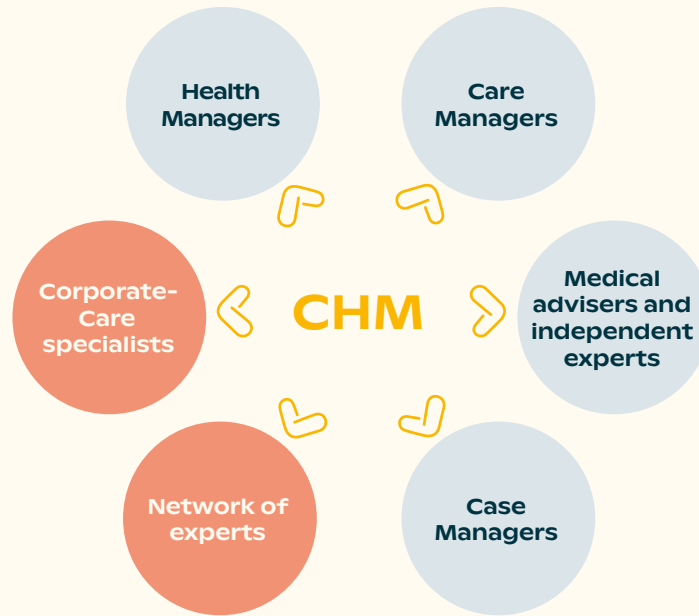
Mediation



...

› A skilled team to support you

More than 200 specialists at your service throughout Switzerland



CorporateCare

CorporateCare, specialists

CHM experts will assess the absenteeism rate in your organisation. They will suggest, give priority to and implement measures and tools to improve your organisation's productivity while ensuring that your employees' working conditions are of high standard.

Network of experts

This network of external specialists provides access to specific expertise for the implementation of your measures (ergonomics, occupational psychology and medicine, etc.).

HumanCare

Health Managers

They manage notifications of incapacity for work quickly and efficiently using a wide range of tools. This approach guarantees that the cases notified are followed up individually.

Care Managers

They make rapid contact with employees who are unable to work to understand the reasons for their absence and identify appropriate support.

Medical advisers and independent medical experts

They assess and check work capacity and give their opinion on treatments and other medical issues.

Case Managers

Called upon to assist in complex cases of incapacity with a potential for return to work, they assist employees with a health problem and support your HR department in the process.

Your advantages



Combine **performance** and **well-being at work**



Choose a **supportive management style**



Attract and retain your employees by being an **attractive employer**



Give a **positive image** of your company to your partners



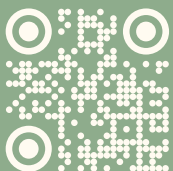
Reduce absenteeism and absence-related costs



Our expertise

- The reference partner for Health and Pension matters
- Over 20 years of experience in CHM
- A full series of training courses on the subject of early detection and absence management
- A number of partnerships with experts involved in CHM
- Internal Case Management (midwives, psychotherapy, physiotherapy, conflict management, etc.)
- Internal Care Management (administrative support, alternative measures, etc.)
- Detailed dashboards of your claims experience
- Active and integrated management of your cases of work incapacity

Groupe Mutuel is the only multiline health and pension insurer for both private and corporate customers.



www.groupemutuel.ch/chm



Non-binding and personal advice

0848 803 777
groupemutuel.ch/chm

